

Aurora Shade Report

Customer

Jeremiah LeRoy

Designer

Matthew Culley

Organization

Renu Energy Solutions

Address

60 Court Plaza
Asheville, NC 28801, USA

Coordinates

(35.595959, -82.548638)

Date

24 August 2022

Annual irradiance



Summary

Array	Panel Count	Azimuth (deg.)	Pitch (deg.)	Annual TOF (%)	Annual Solar Access (%)	Annual TSRF (%)
1	146	165	10	93	92	86
Weighted average by panel count		-	-	-	92.2	85.8

Monthly solar access (%) across arrays

Array	Jan	Feb	Mar	Apr	May	Jun	Jul	Aug	Sep	Oct	Nov	Dec
1	78	86	94	97	97	97	97	97	96	89	80	76

Customer

Jeremiah LeRoy

Designer

Matthew Culley

Organization

Renu Energy Solutions

Address

60 Court Plaza
Asheville, NC 28801, USA

Coordinates

(35.595959, -82.548638)

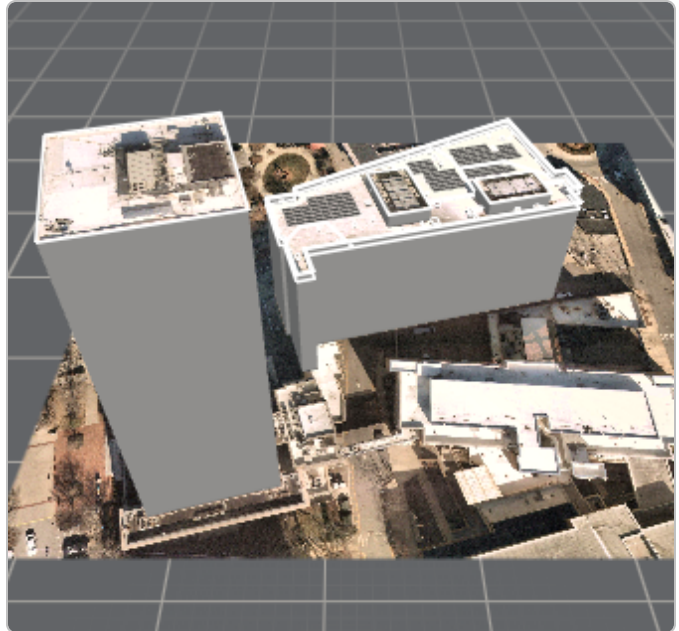
Date

24 August 2022

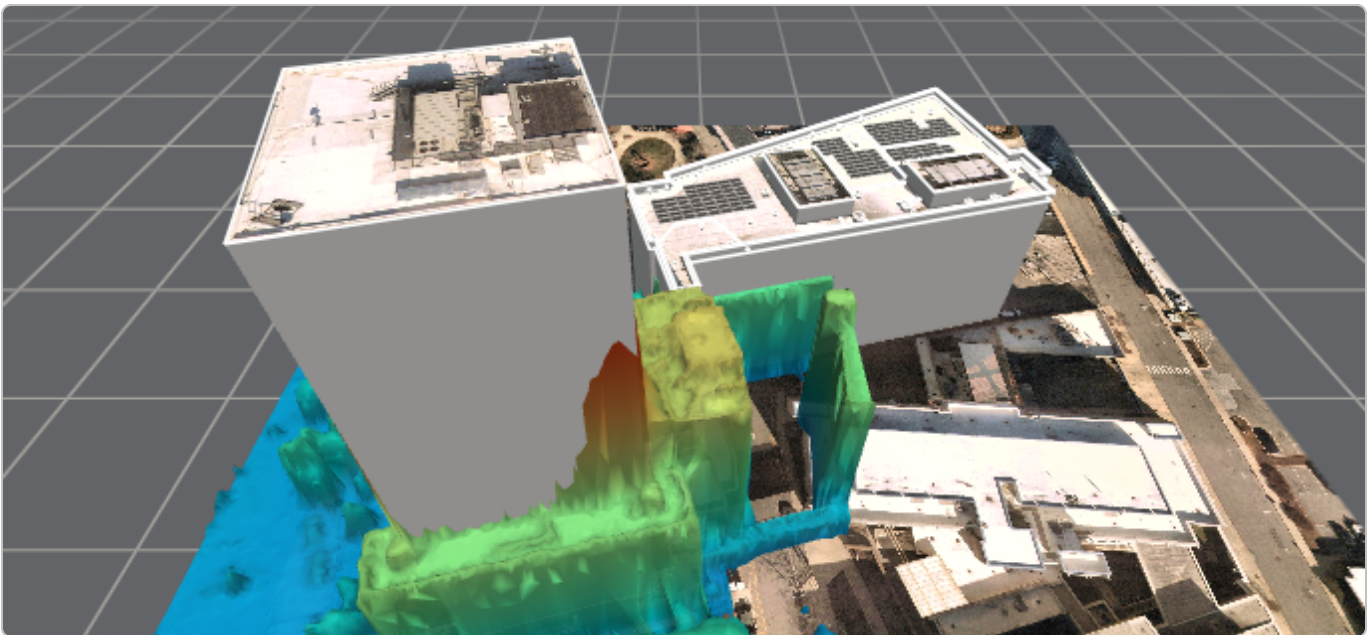
Zoomed out satellite view



3D model



3D model with LIDAR overlay  115 ft



Customer
Jeremiah LeRoy

Designer
Matthew Culley

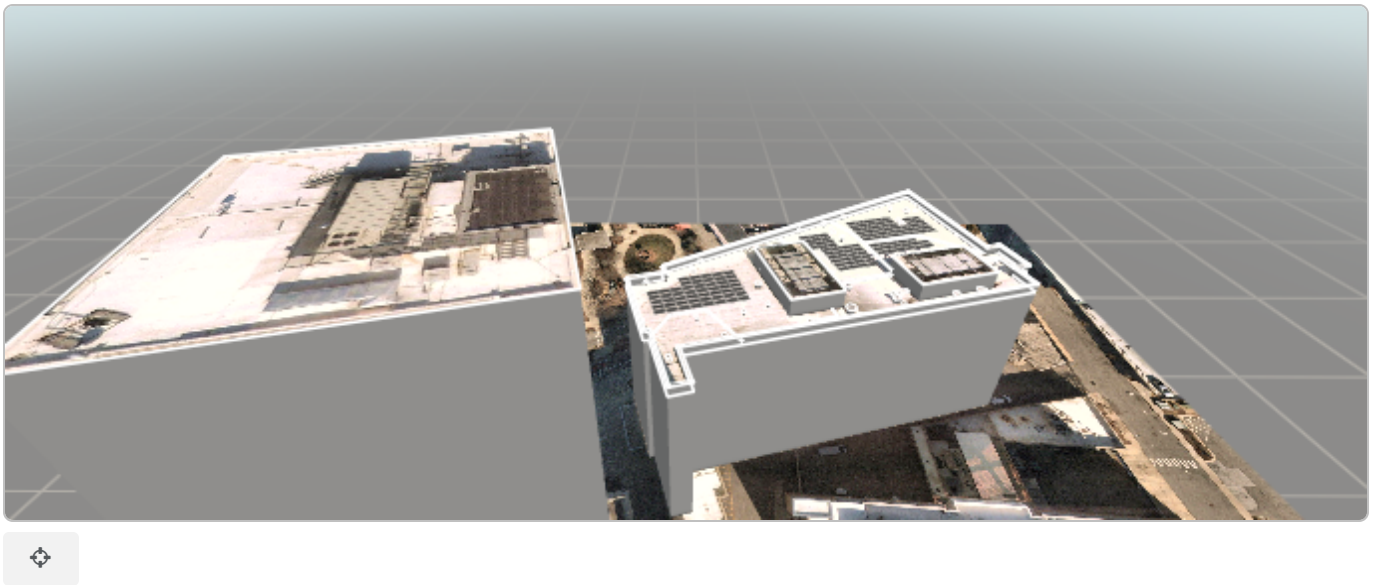
Organization
Renu Energy Solutions

Address
60 Court Plaza
Asheville, NC 28801, USA

Coordinates
(35.595959, -82.548638)

Date
24 August 2022

Street view and corresponding 3D model



I, **Matthew Culley**, certify that I have generated this shading report to the best of my abilities, and I believe its contents to be accurate.